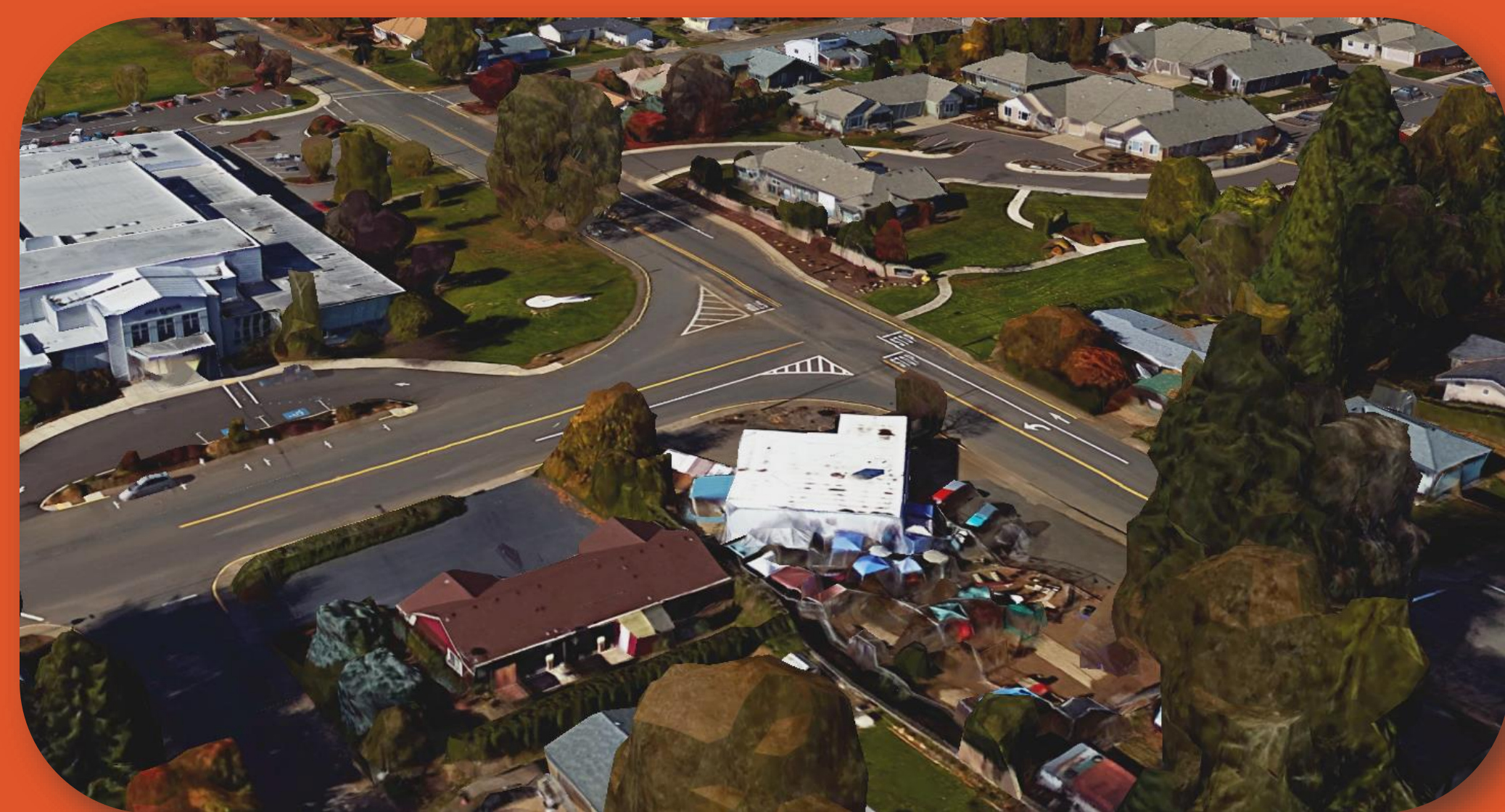


PROJECT GOALS

- Improve level of service
- Improve safety for all road users
- Minimize environmental impacts

EXISTING CONDITIONS

- 8" concrete storm sewer pipe draining south with outfall at Rickreall creek.
- Designated truck route along Ellendale Ave and Levens St.
- No water quality treatment.
- Three-way stop interim solution from Keller Associates implemented in 2021.
- Located between Lyle Elementary School to the south and Dallas Retirement Village to the north.

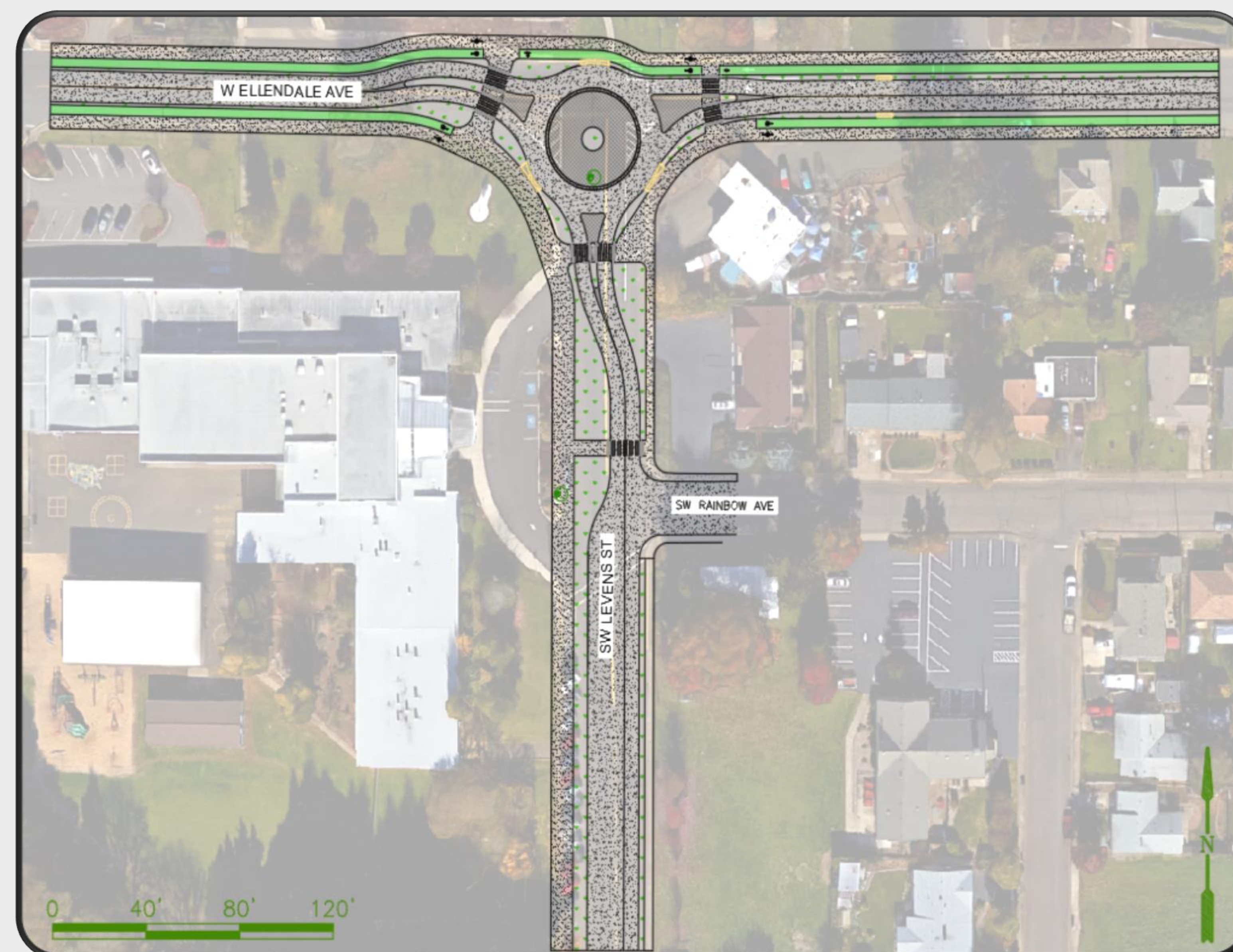


Existing Conditions of Intersection



LEVENS & ELLENDALE INTERSECTION IMPROVEMENT

Located in Dallas, Oregon
on a City Designated Truck Route



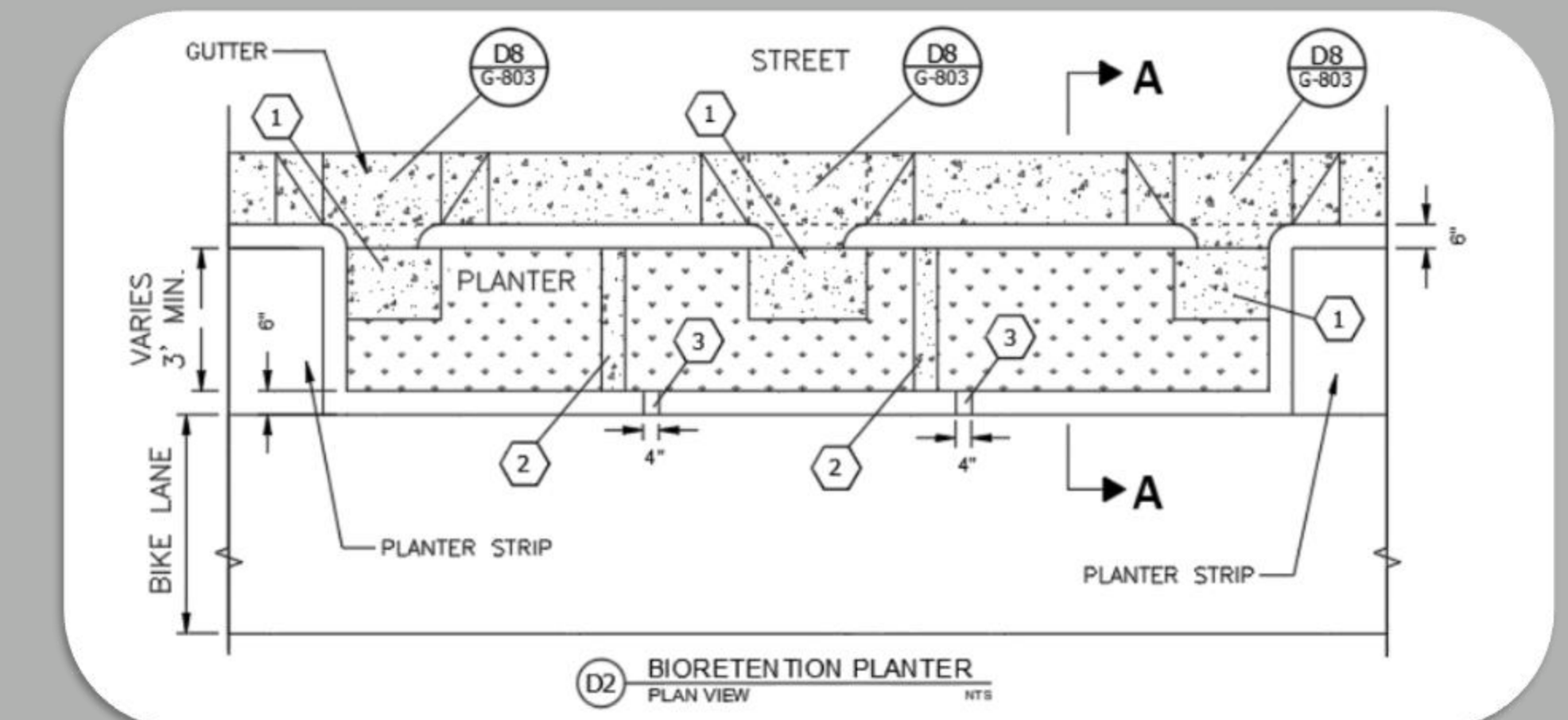
Proposed Design

TRANSPORTATION

- 95' inscribed diameter
- 15' lane inside roundabout
- 10' travel lanes
- Mountable splitter islands and aprons allow for truck access
- Protected bike lanes on W Ellendale Ave
- Multi-use path on west side of Levens St.
- Crossing safety improvements at SW Rainbow Ave.
- ADA compliant sidewalk curb ramps and yellow raised truncated dome detectable warning surfaces
- Landscape buffer grass strip between the roadway and sidewalk or cycle track
- At grade crossings with continental markings

WATER RESOURCES

- 72" pollution control manhole
- 24" storm sewer manhole
- Extension off the existing 8" storm sewer pipe of approximately 275'
- Bioretention planters

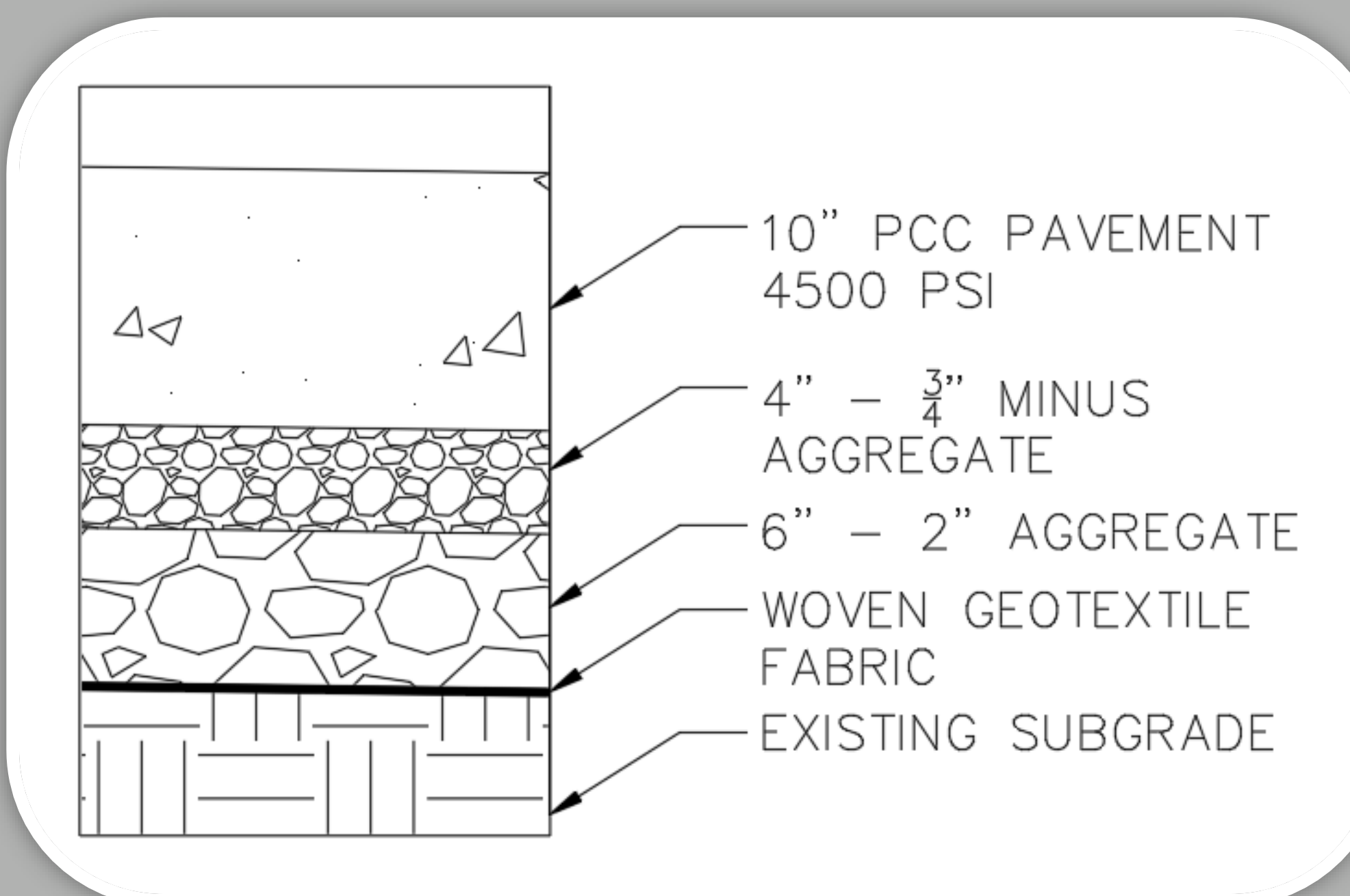


Planter Detail

- Water quality mix
- 6" perforated underdrain pipe
- Sediment basins
- Beehive inlet

GEOTECHNICAL

- Cross section designed for 50 year lifespan
- Portland Cement Concrete pavement
- Stamped Portland Cement Concrete truck apron
- Sidewalk and cycle track cross section



Road Cross Section