

PNW Land Managers Struggle to Obtain Native Plants

The Pacific Northwest is home to a vast variety of plants that play important roles in a many different ecosystems.

Land managers undertake projects to maintain ecosystems and help struggling areas recover, and to do so they need to buy seeds and potted plants. Unfortunately, obtaining these resources can be a difficult, disorganized process, requiring them to go to the websites of individual farms or seed collection groups to find what they need.

Geographic data, such as elevation or ecoregions are also important to customers, because the conditions of their project site should be similar enough to the conditions of the collection site of the seeds that they plant there to have the most success. This kind of visualization if hard to come by, though, adding a layer of tedium to the search.

In addition, sellers have trouble gauging demand for their products because their only input is the number of people who directly contact them. If customers are looking for a certain species, it the only way for them to find out is through word of mouth or for customers to directly request that species.

The Pacific Northwest Native Plants Marketplace aims to become a central hub that helps bridge the gap between buyers and sellers, allowing buyers to find all the data they need to inform their purchases, and helping sellers figure out what is in demand.

PNW PLANTS MARKETPLACE

About the Marketplace: Our marketplace website works to unite cite restoration workers from The Department of the Interior with sellers of native plants and seed collections.

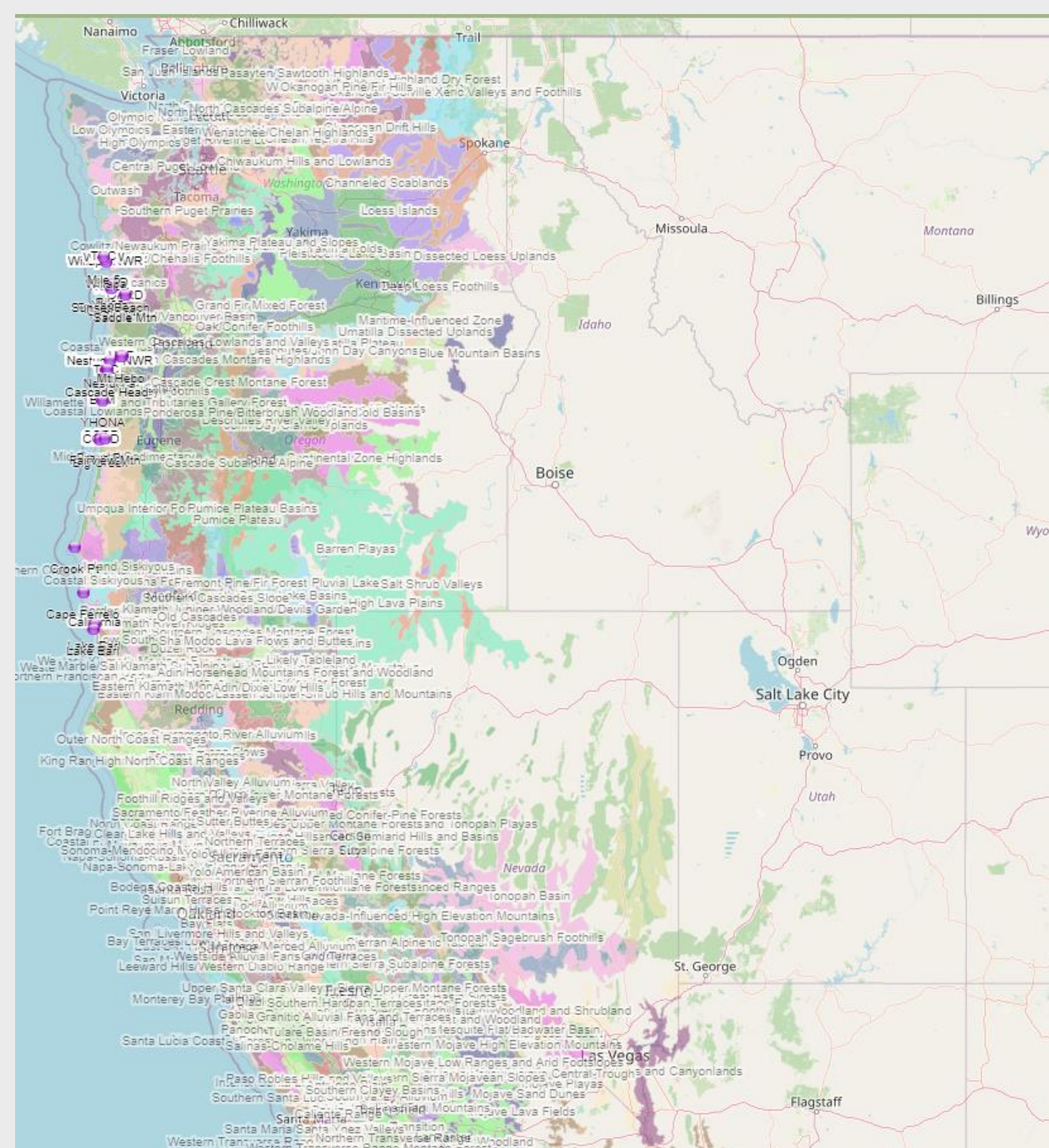
NEW MARKETPLACE STREAMLINES NATIVE PLANT DISTRIBUTION

This new online market place specializes in plants native to the pacific northwest of the United States. It's designed to organizations have an easy way to communicate with each other and find the plants they need to help restore local areas.

The marketplace is invite only, keeping it small scale and available for farms, research labs, nurseries, restoration organizations, etc. This is because most of these organizations only sell on large scale commercial orders. New organizations wanting to participate can contact David Thomson for an invite.

PNW Marketplace

376	c	California thrift
438	z	beach sagewort
234	a	beach sagewort
193	c	deltoid balsamroot
459	z	common mustard
96	z	ripgut grass



WHO CAN JOIN IN?

- Currently only organizations such as farms, research organizations, labs, nurseries, restoration groups, etc in the Pacific Northwest are allowed to join.
- The site is invite only for these organizations to keep things contained and local.
- New organizations aren't counted out, they can reach out to David Thomson (david_thomson@fws.gov) to request an invitation

ACKNOWLEDGEMENTS

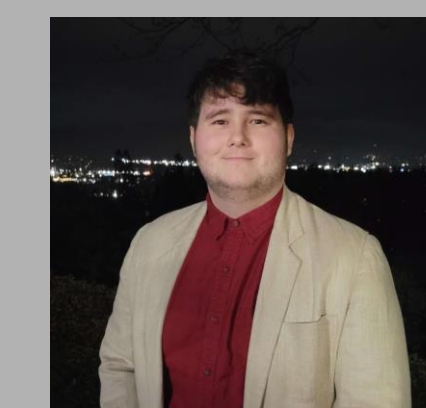


Group Members:

Nat Bourassa
bourassn@oregonstate.edu



Kaushik Pahuja
pahujak@oregonstate.edu



Ryan Smith
smithry9@oregonstate.edu



Nicole Yarbrough
yarbroni@oregonstate.edu

Project Partners:

David Thomson
Restoration Specialist
Oregon Fish and Wildlife Service
david_thomson@fws.gov

