

BALI SORTING FACILITY

Background Information:

- Operates 6 days a week with 48 employees
- Households separate their waste into organic (red) and inorganic (green) bags
- Both bags are collected bi-weekly by motorized tricycles
- The collection service is voluntary, and costs money



RECOMMENDATIONS

Quantity:

- Community collection drives
- Referral and loyalty rewards programs

Quality:

- Apps for independent collectors

Affordability:

- Market/store plastic bags & glass refund programs
- Increased household separation

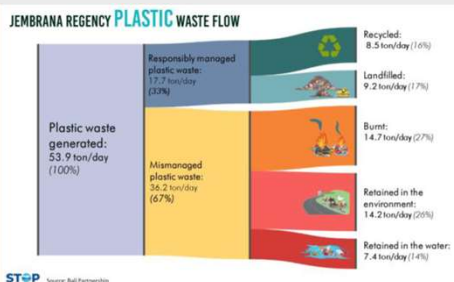
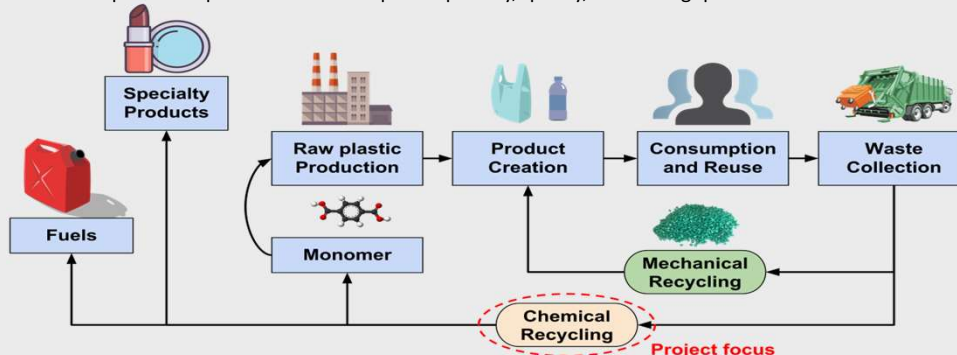


CLOSING THE GAPS IN PLASTIC RECYCLING

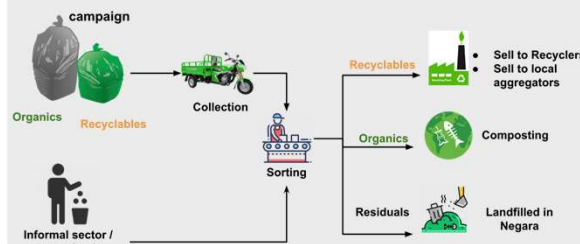
AICHe Student Design Project: Enable a circular economy of plastics by closing critical gaps in the plastic waste management process.

Deliverables:

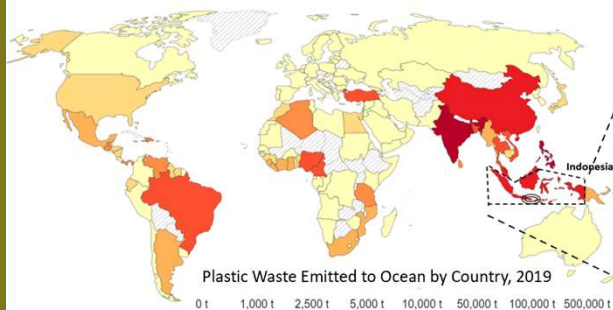
- PyOil purification unit to meet specifications for steam cracking, which will upgrade pyrolysis oil derived from plastic waste.
- "Cold eyes review" of a community-based manual sorting facility in Bali, Indonesia, to improve its operation in three aspects: quantity, quality, and throughput.



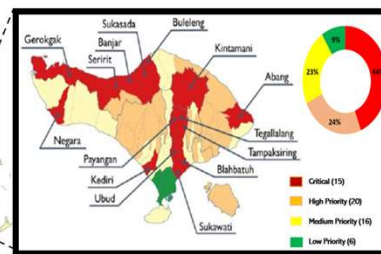
WASTE MANAGEMENT SYSTEM



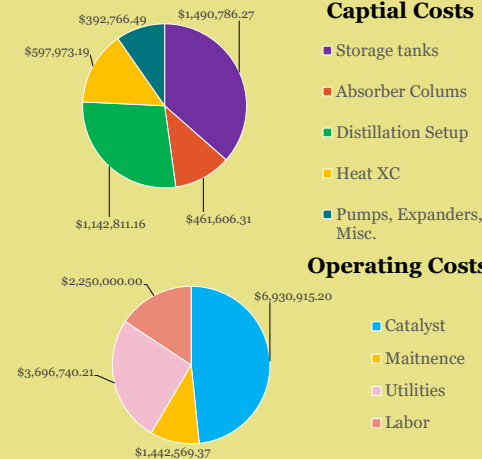
GLOBAL PLASTICS WASTE



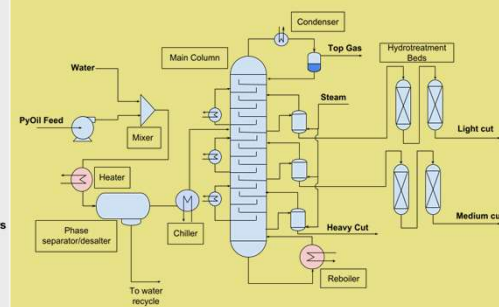
BALI WASTE



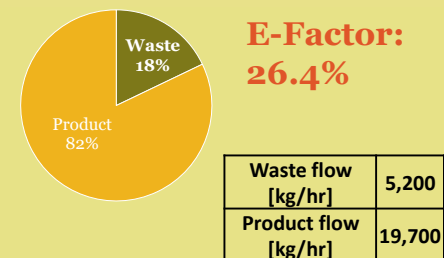
PURIFICATION UNIT COSTS



PROCESS FLOW DIAGRAM



ENVIRONMENTAL FACTOR



References

Solving Waste Management Issues together - bali partnership https://www.balipartnership.org/en_gb/ (accessed May 16, 2023).