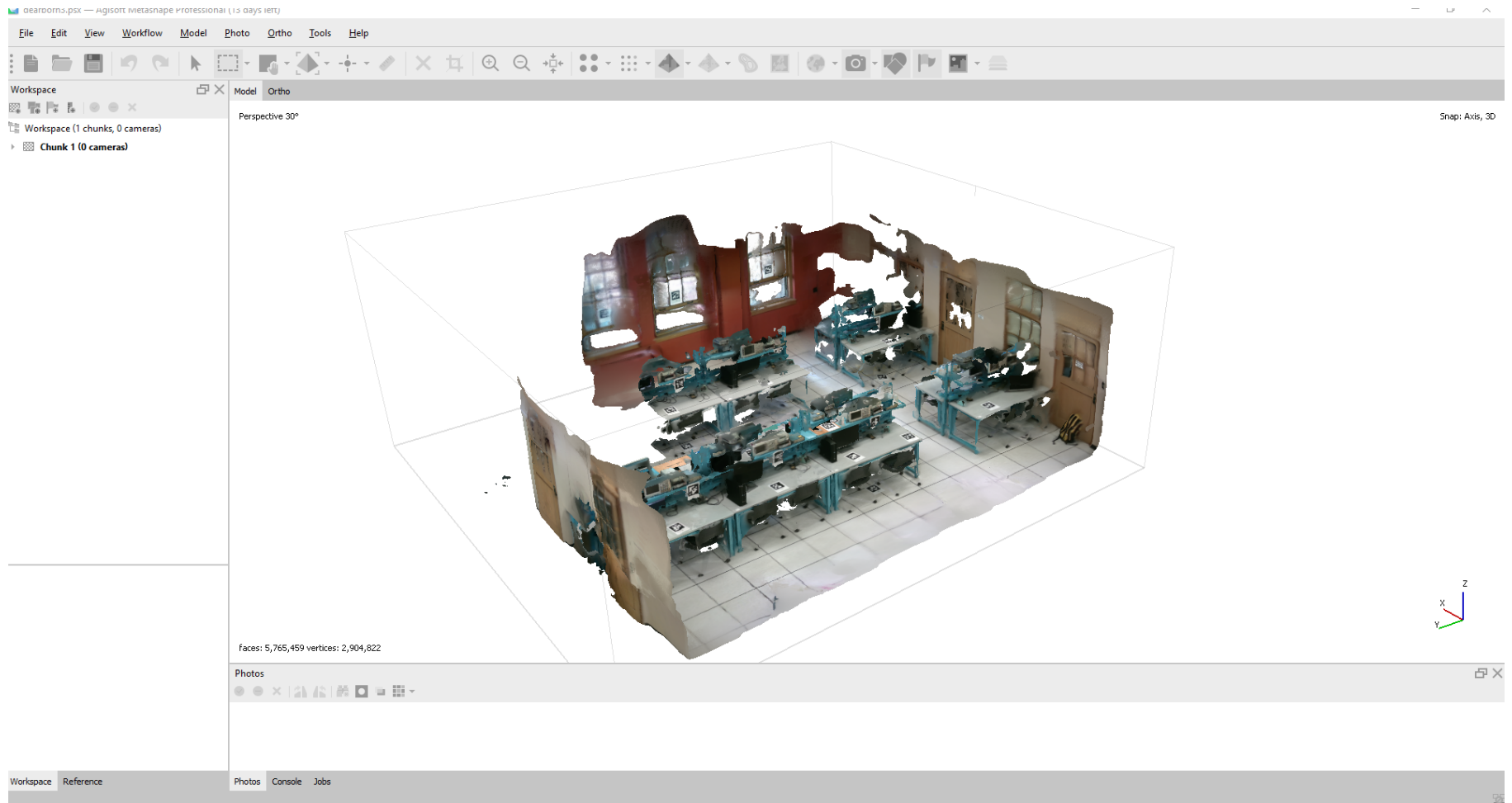


CS11: 3D Scanning of Large Spaces

5/7/2021 Meeting

Brandon Withington, Seika Mahmud, Casey Boomer

Dearborn scans:



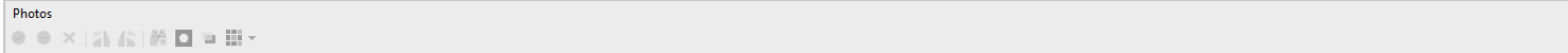


Workspace

- Workspace (1 chunks, 0 cameras)
- Chunk 1 (0 cameras)
 - Shapes (2 Point)
 - Layer (2 Point) [Default]
 - Dense Cloud (34,679,900 points)



Property	Value
Dense Cloud	
Points	34,679,900
Point colors	3 bands, uint8
Coordinate system	Local Coordinates (m)
File size	406.32 MB

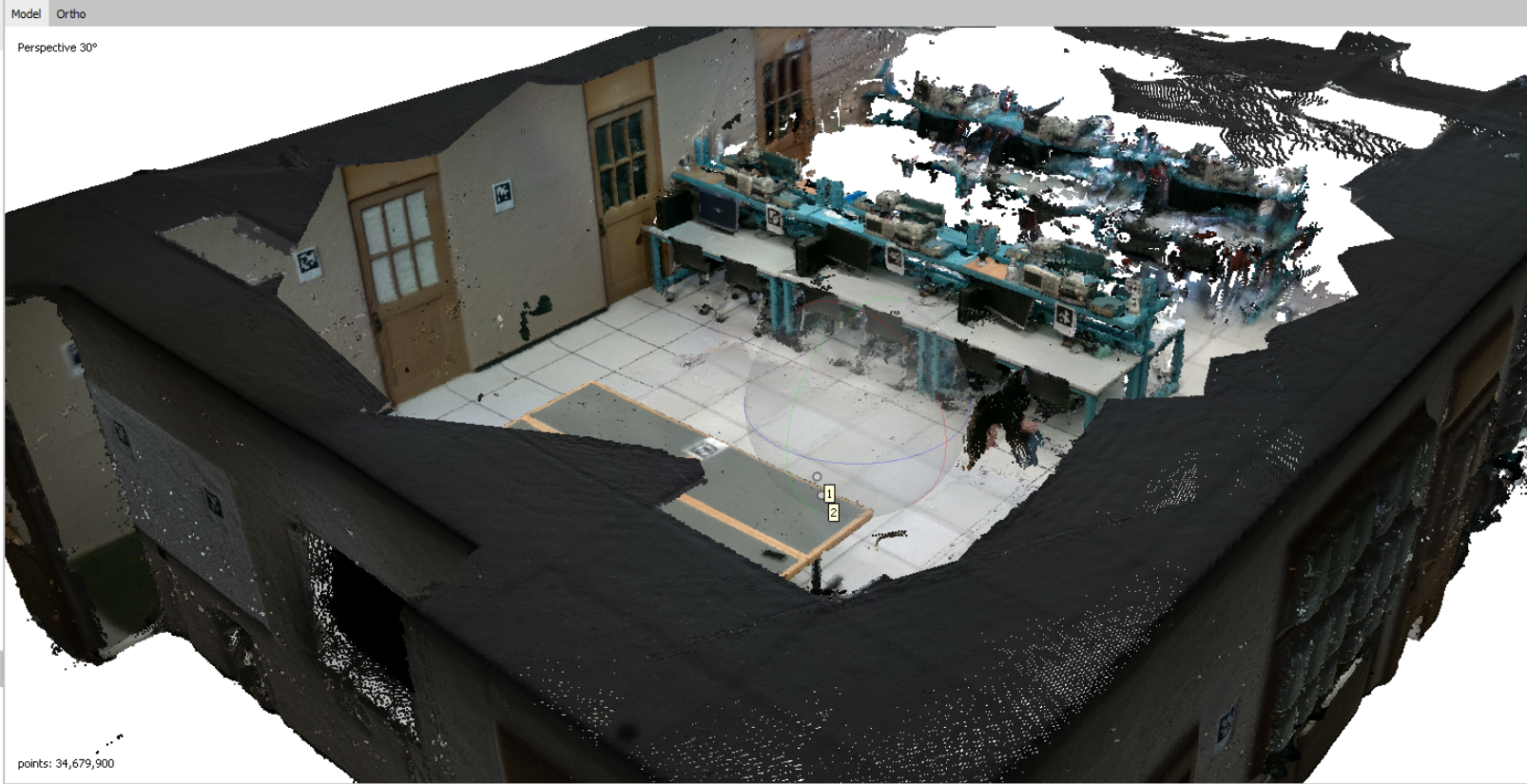




Workspace

Workspace (1 chunks, 0 cameras)

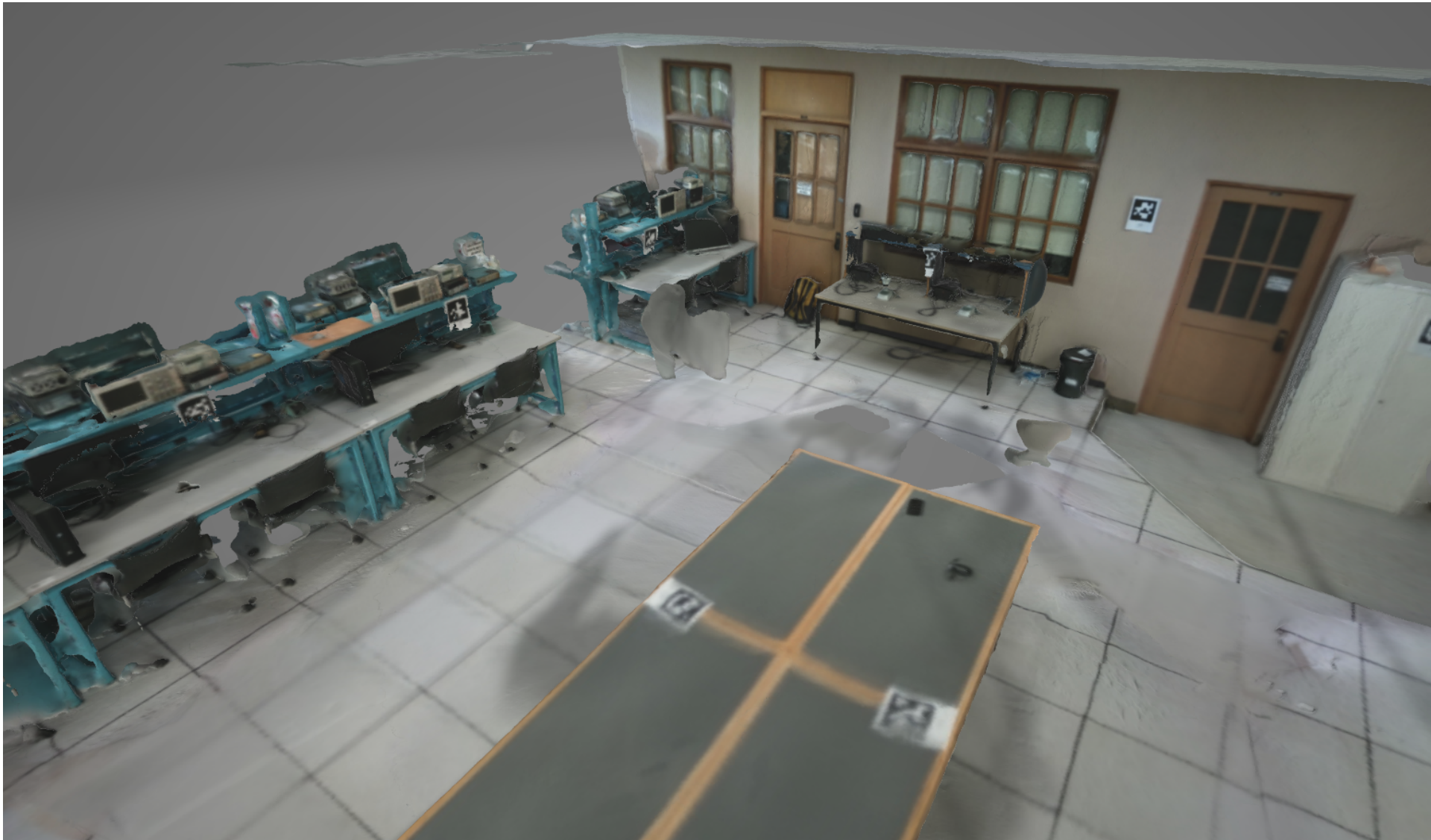
- Chunk 1 (0 cameras)
 - Shapes (2 Point)
 - Layer (2 Point) [Default]
 - Dense Cloud (34,679,900 points)



Property	Value
Dense Cloud	
Points	34,679,900
Point colors	3 bands, uint8
Coordinate system	Local Coordinates (m)
File size	406.32 MB

points: 34,679,900

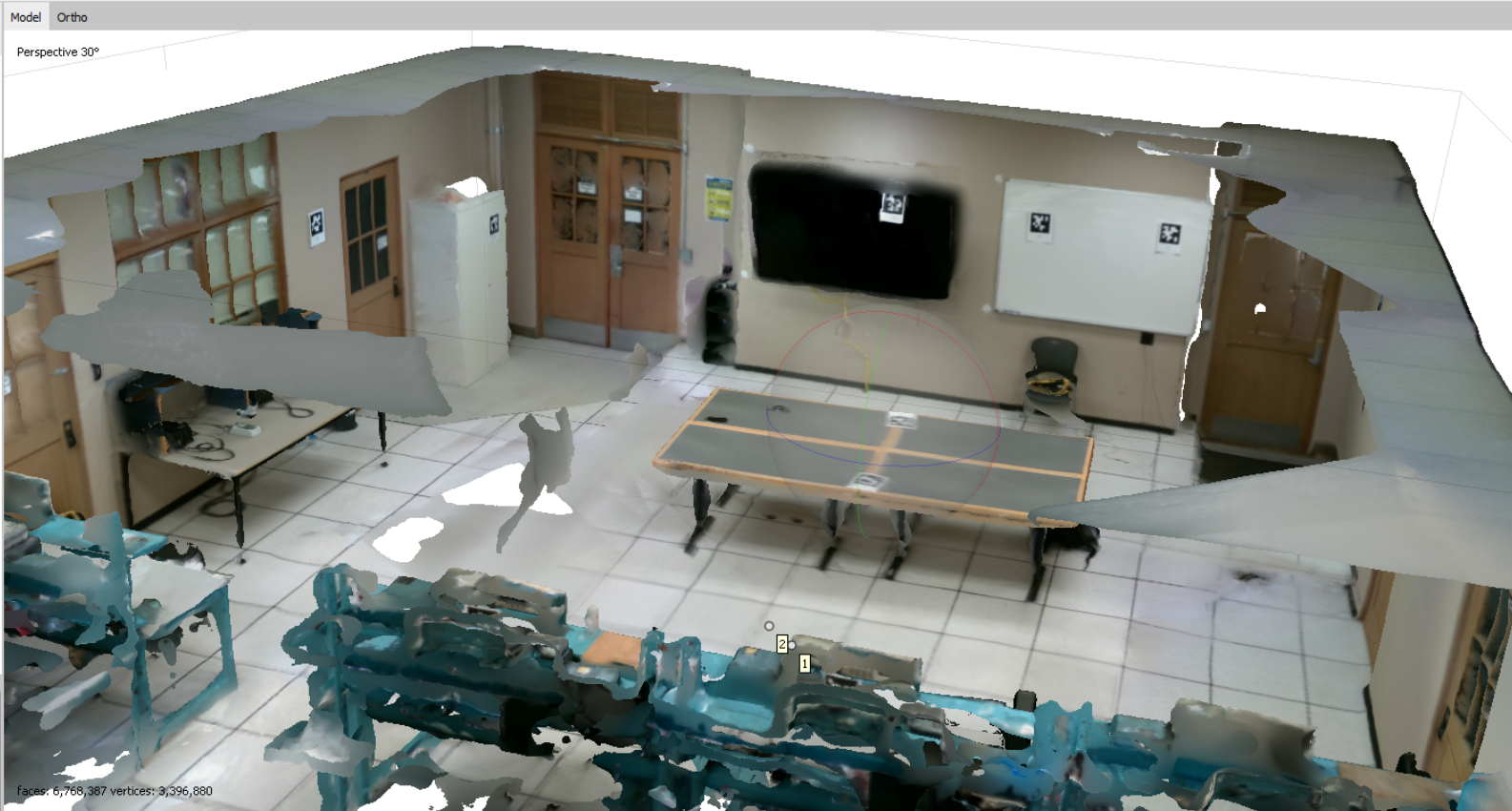
Photos





Workspace

- Workspace (2 chunks, 0 cameras)
- Chunk 1 (0 cameras)
 - Shapes (2 Point)
 - Dense Cloud (33,842,258 points)
 - 3D Model (6,768,387 faces)
- Chunk 2 (0 cameras) [T]



Property	Value
Model	
Faces	6,768,387
Vertices	3,396,880
Vertex colors	3 bands, uint8
Reconstruction parameters	
Surface type	Arbitrary
Source data	Dense cloud
Interpolation	Enabled
Strict volumetric masks	No
Processing time	10 minutes 28 sec

Photos

